

Brandon Hoover
Photography
& Design





Hello,

My name is Brandon Hoover and I am photographer and designer living in Florida. This portfolio gives a good variety of my work and will hopefully give you an idea of not only who I am, but how I work as well.

Living in Florida for most of my life, I have acquired quite a few hobbies ranging from fencing to rock climbing (it's Florida, of course it's in a gym) to scuba diving. There are other outdoor activities that I do on a regular basis, but those are the highlights. I tend to be most passionate about my photography and design projects though. I enjoy my career choice immensely.

Sadly, the last couple of years have been spent programming. I have not been able to spend anywhere near as much time doing design work as I would like. Because of this, I am currently trying to relocate and refocus so that I am more heavily doing design rather than programming.

Photography Design



Table of Contents

3



Design

Soil & Water Science
Distance Education

CoverAll
Painting & Repair

EcoLearnIT
Reusable Learning Object System

TerraC
Terrestrial Carbon
Information System

Science
air Ki



CoverAll
Painting & Repair

Industrial, Commercial & Residential
Same Day Free Estimates
Next Day Service

<http://www.coverallpainting.com>
3522 SW 42nd Ave. Office: 352-336-9400
Gainesville, FL 32608 Fax: 352-336-9429
Certified General Contractor #1505226

CoverAll
Landscaping

Lawn Maintenance, Trimming, Pressure Washing
Same Day Free Estimates
Next Day Service

<http://www.coveralllandscaping.com>
3522 SW 42nd Ave. Office: 352-377-5773
Gainesville, FL 32608 Fax: 352-336-9429
Certified General Contractor #1505226

CoverAll
Carpet & Cleaning

Industrial, Commercial & Residential
Carpet Cleaning & Water Extraction
Next Day Service

<http://www.coverallcarpet.com>
3522 SW 42nd Ave. Office: 352-316-1021
Gainesville, FL 32608 Fax: 352-336-9429

CoverAll
Painting & Repair, Inc.

3522 SW 42nd Ave.
Gainesville, FL 32608
Office: 352-336-9400
Fax: 352-336-9429

<http://www.coverallpainting.com> CGC # 1505226

CoverAll
Landscaping, Inc.

3522 SW 42nd Ave.
Gainesville, FL 32608
Office: 352-377-5773
Fax: 352-336-9429

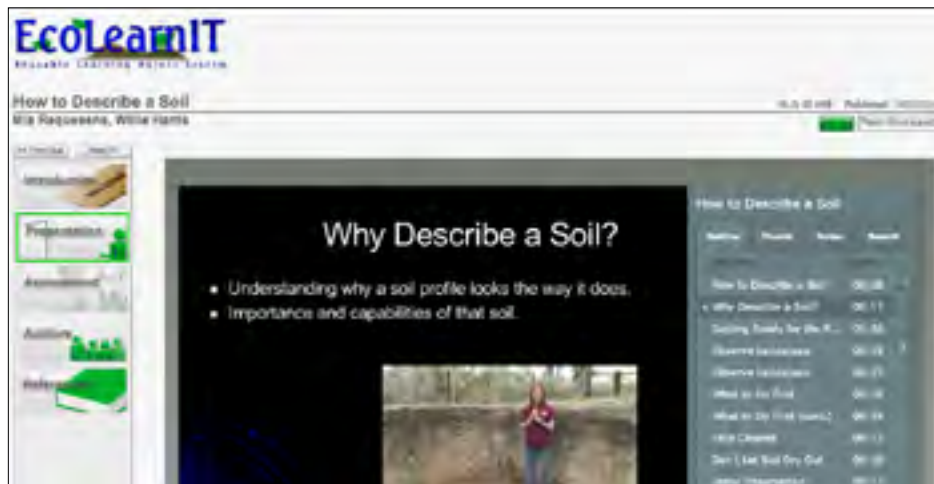
<http://www.coveralllandscaping.com> CGC # 1505226

CoverAll
Carpet & Cleaning

3522 SW 42nd Ave.
Gainesville, FL 32608
Office: 352-377-5773
Fax: 352-336-9429

<http://www.coverallcarpet.com> CGC # 1505226

<http://EcoLearnIT.ifas.ufl.edu>



<http://TerraC.ifas.ufl.edu>



The University of Toronto's Robert H. Smith School of Education offers a unique online Master of Science Environmental Learning Thesis (MSELT) program and advanced education to environmental science-focused students, including in environmental sciences related to food and nutrition, as well as agriculture, food systems, and food security. The MSELT is designed for students who want to enhance their knowledge in environmental science, ranging from education aspects, food and natural resources, citizenship to students who want to pursue an environmental science degree. As a result, the MSELT is highly flexible and can be completed and adapted to individual needs. The program can also serve as

an important flexibility

for students who give you, the graduate, the opportunity to earn a graduate degree from the University of Toronto. With the use of high speed Internet, students receive both classroom and laboratory work from anywhere in the world. The MSELT is an online program that can be completed in one of the 100 Network and Education Centers of accredited students in research institutions around the

world.

Great Results.

The Distance Education Graduate Track is designed specifically for students with full-time jobs, families, or other obligations that prevent a leave of absence, or the

Degree
MEd
Ph.D.

Credits
36 credits - thesis
34 credits - non-thesis (special topic project)
up to 3 graduate credits with grades B or better taken prior to formal admission may be transferred into the program to meet degree requirements upon approval.

Time
Two to four years.

bachelor's degree from an accredited college or university (major in environmental science, soil and water science, or an equivalent degree in an allied field such as geology, natural resources, biology, ecology, hydrology, microbiology, horticultural science, environmental engineering, agricultural engineering or agronomy).



Admission criteria include a 3.0 average or better for the last two years of the baccalaureate program, and satisfactory scores (total of 1000) in verbal and quantitative portions of the General Test of the Graduate Record Examinations (GRE).

Starting dates are Spring semester (January) and Fall Semester (August).

For more information about pursuing a Ph.D. in related or complementary education fields, please contact the Distance Education Coordinator at SCoord@hawaii.edu.

List of Approved Courses	
EN 1000	Soil And Environmental Biotechnology
EN 1418	Environmental Waste Management
EN 1514	Processes, Soil & Water Leaching
EN 1510	Wastewater & Water Quality
EN 1105	Water Resource Sustainability
EN 1880	Soil Microbiology
EN 1400	Soil Water Chemistry
EN 1005	Industrial Soil Physics
EN 1714	Geospatial Modelling
EN 1700	Soil Land Resource Management
EN 1154	Soil Quality
EN 1161	Sustainability of Soil Systems
EN 1162	Soil Contamination & Remediation
EN 1498	Sustainability of Watersheds

SCS 9906	Special Problems
SCS 9999	Senior
SCS 9990	Supervised Teaching
SCS 9997	Western Research
SCS 7979	Advanced Graduate
SCS 7999	Doctoral Research

A complete list of effective measures is available at:
<http://www.kiaukf.edu.pl/en/infrastructure.html>

Despite making students pay more than the cost of the meal, applied spatial and econometric studies show that an increase in using some campus canteen facilities may register as "a little cheaper" eating the "cheap".

We use state-of-the-art electronic wiring to bring the electronics to your home. Methods include Radio® Remote Line, DVI-D connected digital video, dual-axis boards, pre-fabricated fiber optic, multi-line, ultra-low-loss, and other advanced tech.

Florida Soil Characterization Database

Home
 Overview
 Products
 Data Access
 GIS Layers
 Acknowledgements

The Florida Soil Characterization Database provides access to a comprehensive soil dataset which (morphological data), soil taxonomy information, geographic coordinates, and soil fertility analysis and parent source about 1,000 profiles and over 5,000 horizons distributed across 26 counties in Florida.

UNIVERSITY OF FLORIDA
 IFAS

[illegible]



[Home](#) | [About Us](#) | [Contact Us](#) | [Privacy Policy](#) | [Terms of Service](#)



Forest and Soil Ecosystem Services

[Click here for course content](#)

No online meeting scheduled [Events Calendar](#)

Please Sign In **No Upcoming Events**

[Change User Message](#)



Resilient Learning

[Click here](#)

No online meeting scheduled

Please Sign In **No Upcoming Events**

[Change User Message](#)



Testing Class

[Click here for course content](#)

[Go To Your Online Meeting](#) [Events Calendar](#)

Please Sign In **No Upcoming Events**

[Go to \(test\)](#)

[Change User Message](#)



Art Director



* These pieces were created through my direction. The work was either partially or completely done by other artists.

City Spaces









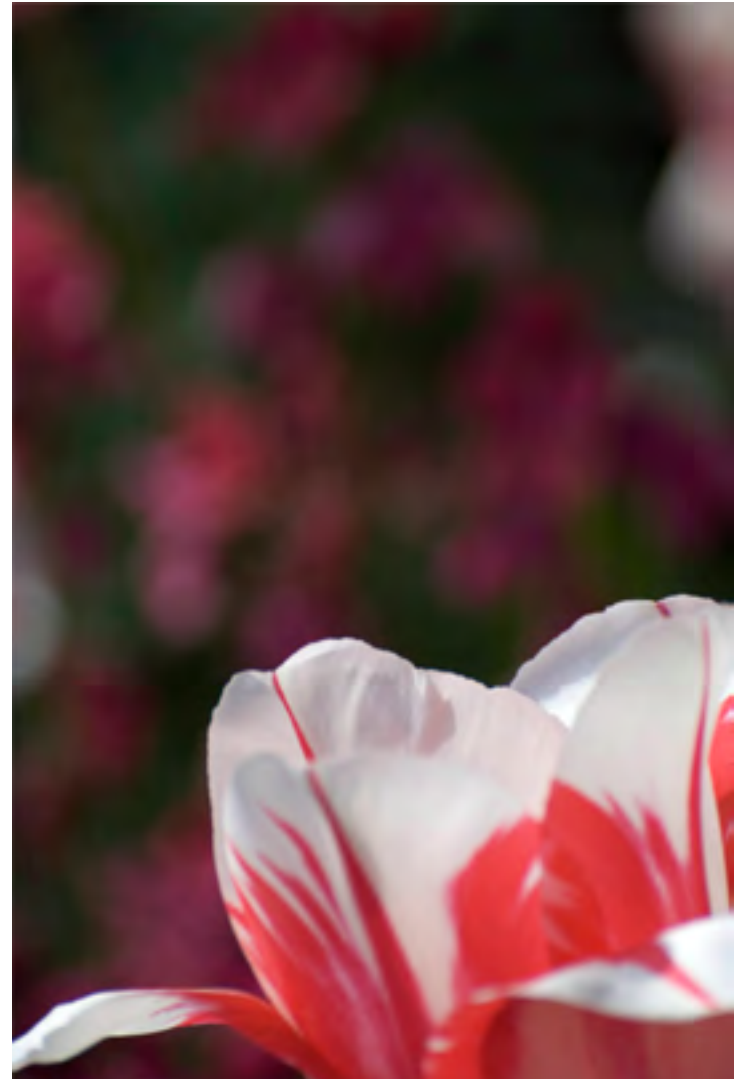


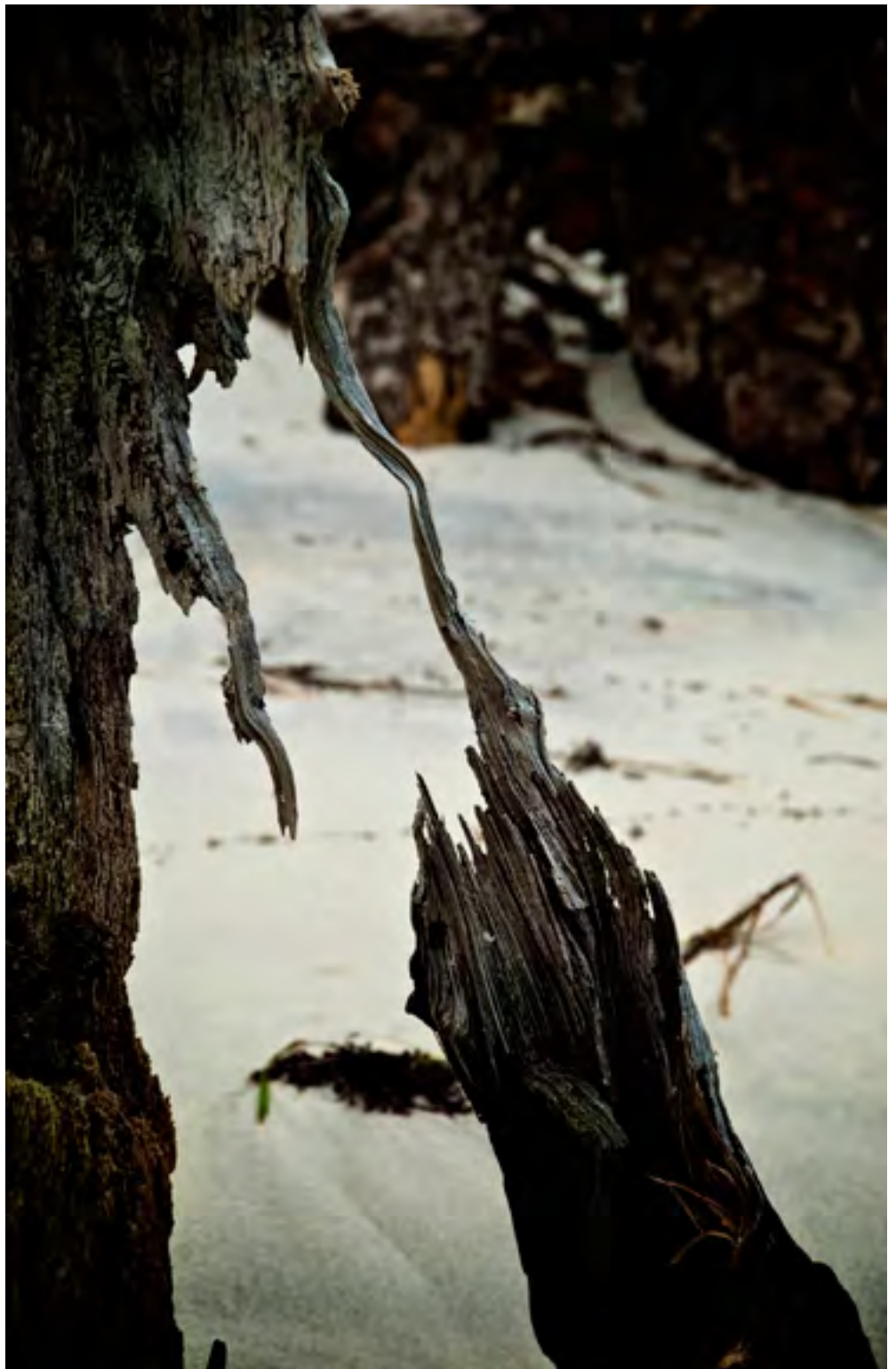


Nature

Nature

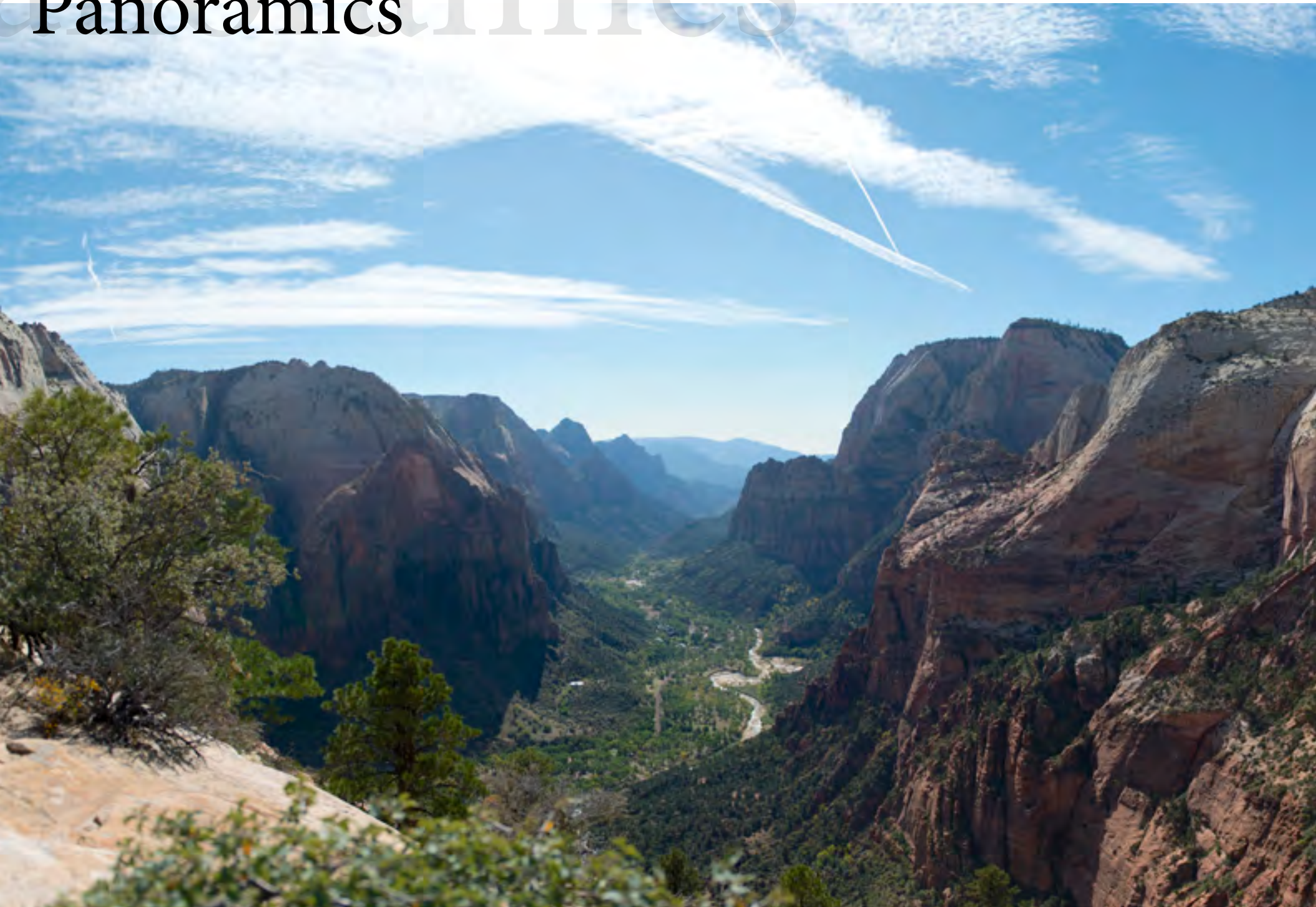




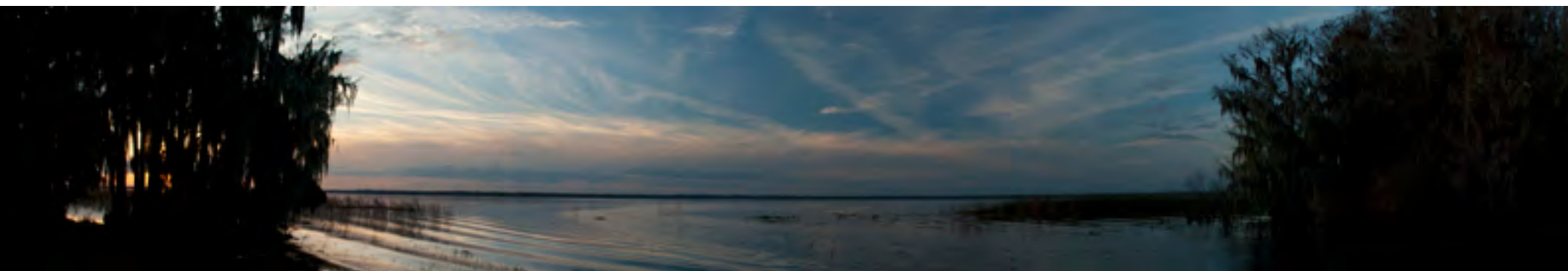




Panoramics

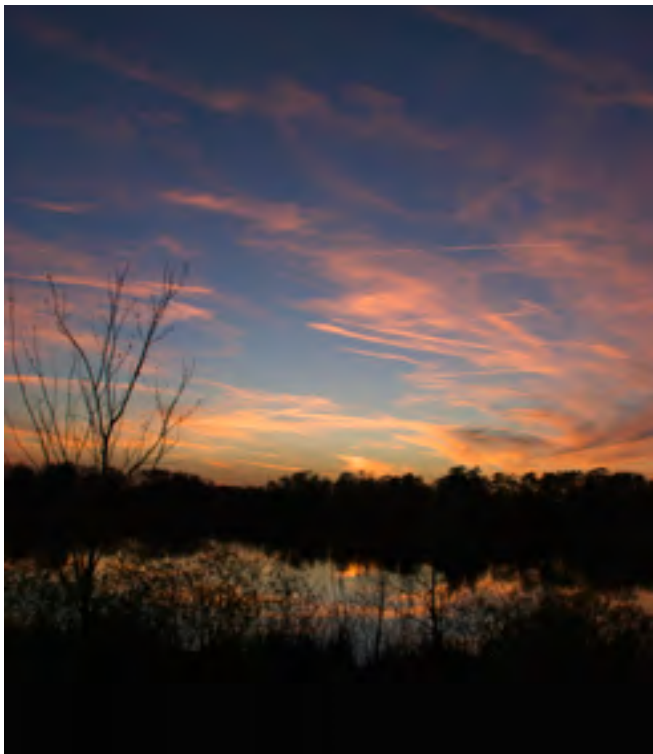
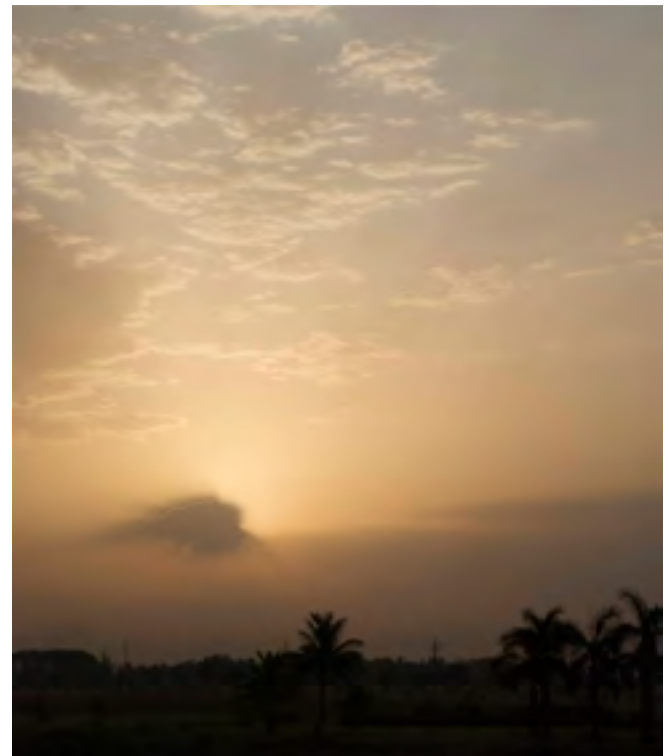






Landscapes













Copyright 2014 Brandon Hoover
Brandon@ethumbprint.com
www.ethumbprint.com